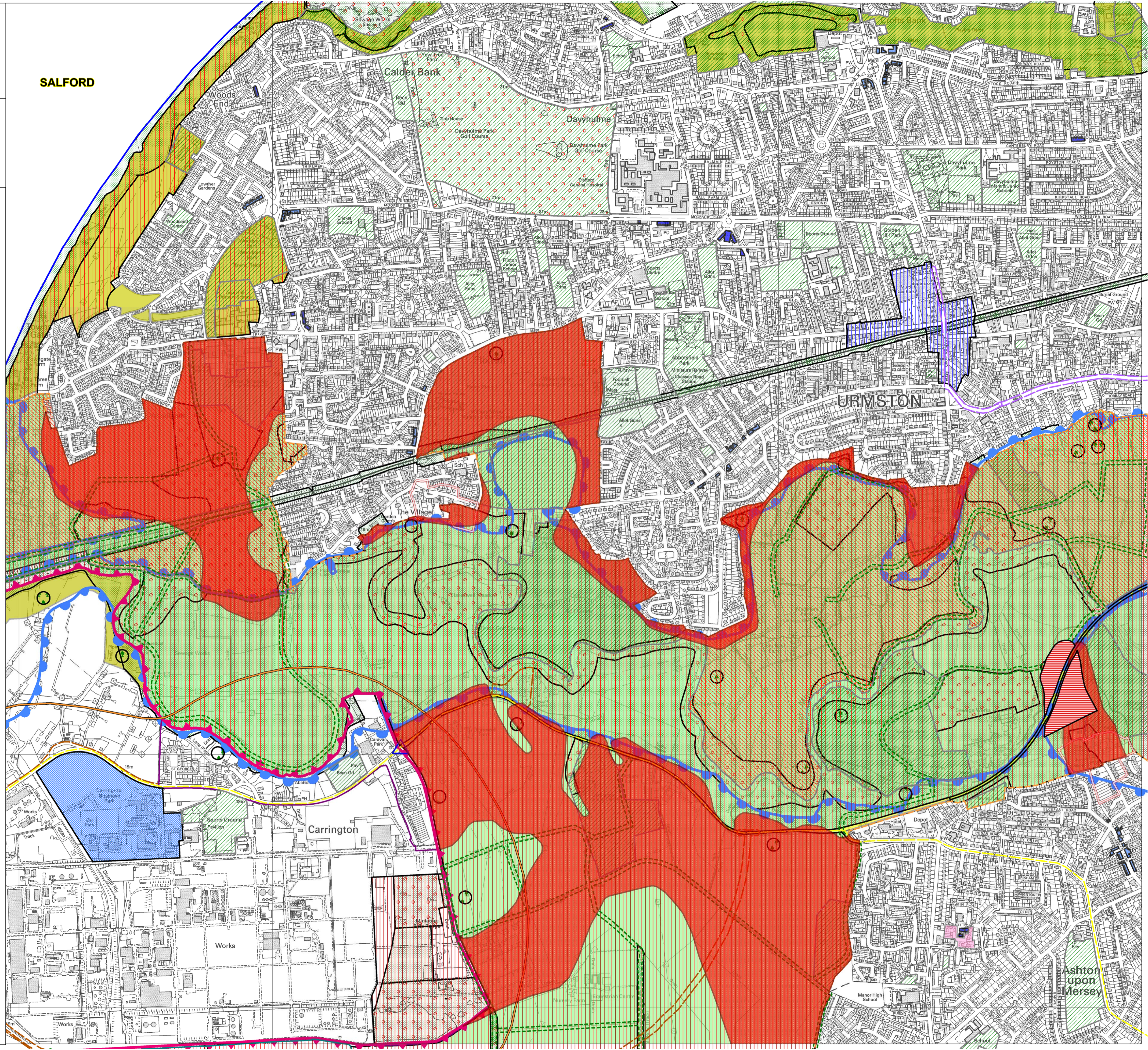


SALFORD

Policies Map - Proposed Map 1



- Glaciofluvial deposit - Mineral safeguarding area
- Gravel - Mineral area of search
- Conservation areas
- Special health and safety development contri sub area
- The Mersey Valley
- Protected open land
- Quality bus corridor
- Junction improvement
- Other highway improvement
- Other strategic route
- Town and District shopping centre
- New brideway bridge
- Recreation route
- New open space
- Protected open space
- Priority areas for regeneration
- Non-food bulky goods, retail
- Consolidation, improvement, modernisation
- Mixed use development
- Strategic development site
- Main office development area
- Main employment area
- Community forest
- Site reclamation
- Protection of landscape character
- Woodland planting
- River valley floodplain
- Wildlife corridors
- Areas of nature conservation value tree and hedgerow protection special landscape features
- Large sites released for housing development
- Regional sports complex
- Trafford park core industrial area
- Metrolink stations
- Trunk and primary route network
- Improvement to the trunk and primary route network
- Neighbourhood shopping centre
- Local shopping centres
- Protection landscape sites
- Protected linear open land
- Green belt
- Trafford Boundary
- Manchester United stadium area
- Davenport Green estate boundary
- Sinderland development area
- New railway and Metrolink stations
- Possible Metrolink extension
- Extensions to Metrolink
- M60 Motorway widening
- Retail Park
- Trafford Centre
- Trafford Park rail corridor
- World Freight Centre
- Trafford Park Ecology Park
- The Village Business Park
- Hadfield Street Industrial Estate
- Davenport Green development area



Reproduced from the Ordnance Survey mapping with the permission of the Controller of Her Majesty's Stationery Office © Crown copyright. Unauthorised reproduction infringes Crown copyright and may lead to prosecution or civil proceedings. Trafford Borough Council. OS Licence No. LA076392.